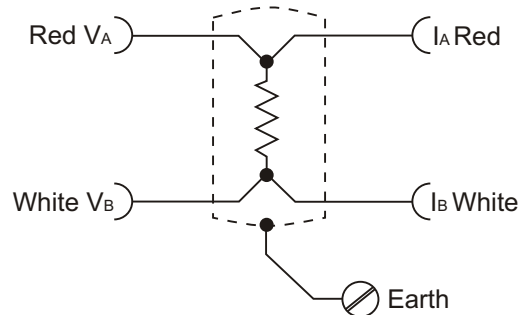


Reference Resistor



SPECIFICATION

Tolerance	1 to 10 Ohms $\pm 0.005\%$ (50ppm) >10 to 100 Ohms $\pm 0.0025\%$ (25ppm) >100 to 1000 Ohms $\pm 0.001\%$ (10ppm)
Test certificate	± 5 ppm
Optional calibration	Up to ± 0.1 ppm
Stability	$< \pm 5$ ppm per year
Temperature coefficient	< 1 ppm per $^{\circ}\text{C}$
Frequency dependence	Typically < 1 ppm (< 0.25 mK), up to 400Hz
Working temperature	20°C , but within the range of 15°C to 40°C
Connection type	Full 4 wire to 4mm insulated terminals, plus earth connection to case.
Dimensions / weight	Diameter: 76.2mm, Height: 90mm, Weight: 1kg.

1 Ohm to 1000 Ohms

ORDER CODES

RRx	where x is 1, 10, 25, 100, 300 or 1000 ohms. Other values available.
BNC/ADAP	Adaptor for converting 4mm insulated terminals to BNC socket (2 req'd)
CAL-RES-A	Optional UKAS calibration d.c. @ 20°C